

STRAMIT ARCHITECTURAL RANGE

Where beautiful
design meets quality
Australian made* steel

**WHERE BEAUTY,
QUALITY AND COLOUR
ALL COME TOGETHER**





INTRODUCING THE STRAMIT ARCHITECTURAL RANGE

Beautiful from every angle and made to the highest standard, the range uses high quality Australian made* steel. And all in a colour you'll love. Choose from differing covers, pans and finishes to bring your vision to life.

We're also here to help you along the way. Our national team of product and industry experts is available if you need us, whether you need help with specification, product information or field engineering support.

You're also backed by a long-standing commitment to quality. We're one of the few steel roll formers in Australia with our very own national research and development facility, which was initially established more than 30 years ago. We know and test for Aussie conditions.

**Excludes Magnaflow*

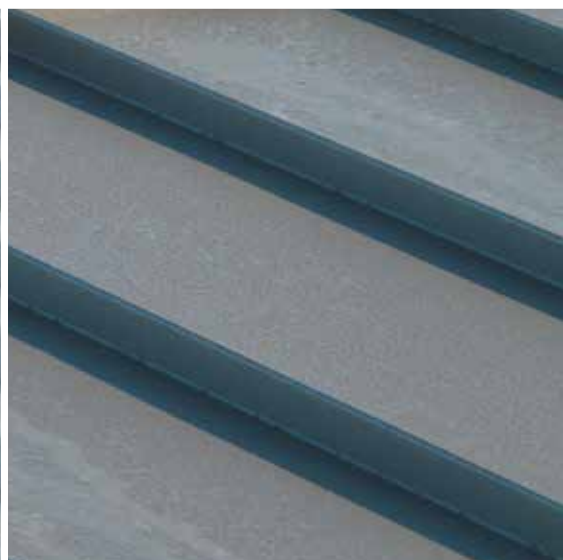
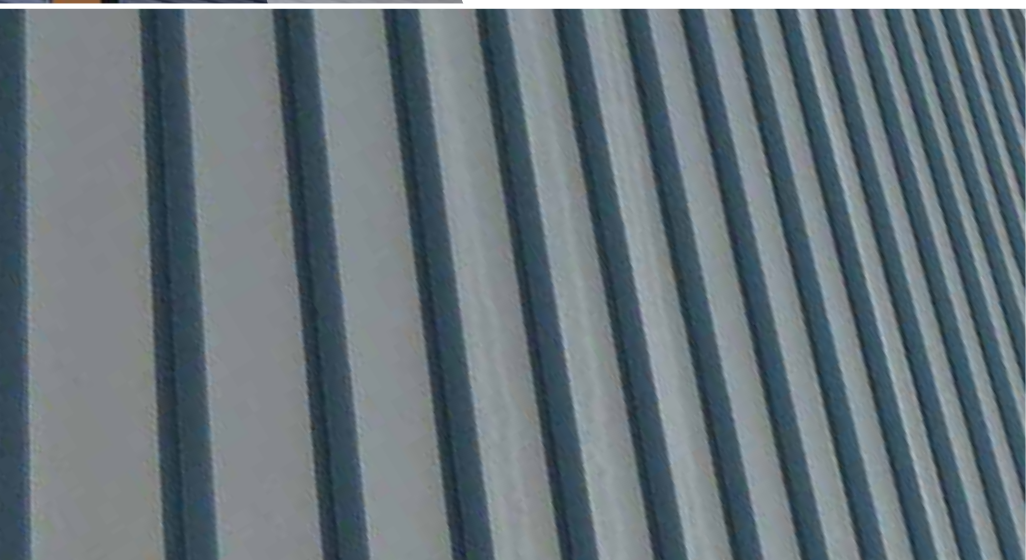


MONOPANEL®

Featuring an angled rib and flat face, Monopanel® wall cladding is the profile of choice for those looking for clean subtle lines.

With a concealed fixing, this walling profile provides an elegant, yet understated finish to any structure.

Available NSW, ACT, VIC, SA, TAS.

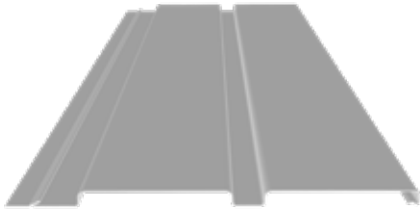


C-CLAD 280

Boasting traditional lines to enhance any structure.

Let your design be the hero with C-Clad 280 wall sheeting. The crisp, traditional lines of this profile will complement any project. Suitable for horizontal and vertical installations, and designed with durability in mind.

Available QLD, NT.



PREMIER 300™

The architectural panel of choice for commercial structures.

A stunning profile with a wide cover for those looking for clean, continuous lines on big, commercial canvases. Injects a modern finish to any project, while giving you the choice between vertical or horizontal lines.

Available QLD, NT.



SHARPLINE™

Make texture the focal point with beautiful sharp lines, finished off in quality Australian* made steel.

Sharp, striking lines take centre stage with this impressive profile. Crisp wide pans and sharp ribs create a profile that showcases simplicity. An adaptable product that is available in a range of sizes, which can also be installed vertically, horizontally or diagonally using various methods.

Available QLD, NT, NSW, ACT, VIC, SA, TAS.



COLORBOND[®] STEEL

The COLORBOND[®] steel range of designer colours offers a classic and contemporary palette to enhance the beauty of every build.

CLASSIC COLOURS



CONTEMPORARY COLOURS



COLORBOND[®] ULTRA STEEL



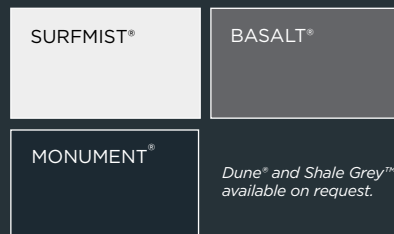
COLORBOND[®] STAINLESS STEEL



COLORBOND[®] METALLIC STEEL



COLORBOND[®] STEEL MATT



Dune[®] and Shale Grey[™] available on request.

MAGNAFLOW[®]

Magnaflow[®] is an ideal solution for highly corrosive environments.



Many colours and finishes are kept in stock for fast manufacture and delivery. However, some colours and finishes require longer lead times and, in some cases, minimum order quantities. Check with your Stramit Building Products representative before ordering. Note that not all products are available in all finishes.

© 2021 Stramit Corporation Pty Limited ABN 57 005 010 195. A member of the Fletcher Building Group. Use of [™] and [®] indicates trade marks of Stramit Corporation Pty Limited. MagnaFlow[®] is a registered trademark of Fletcher Building Holdings Limited. STR013-JUL21.

Colorbond[®]

The COLORBOND[®] steel colour swatches and images shown have been reproduced to represent actual product colours as accurately as possible. However, we recommend checking your chosen colour against an actual sample of the product before purchasing, as varying light conditions and limitations of the printing process may affect colour tones. COLORBOND[®], ZINCALUME[®] and [®] colour names are registered trade marks of BlueScope Steel Limited. [™] colour names are trade marks of BlueScope Steel Limited. ABN 16 000 011 058.