



22 COLORBOND®  
steel core colours,  
& 6 colours in a  
premium Matt finish

**dinky di sheds**

**1800 785 224**

[www.dinkydisheds.com.au](http://www.dinkydisheds.com.au)

3D SHED DESIGNER



REQUEST A QUOTE



**MANUFACTURED LOCALLY, DISCOUNTED DELIVERY STATEWIDE  
AUSSIE MADE. AUSSIE STEEL.**



**Save \$500!**

**FROM \$6,900**

**DOUBLE GARAGE**

6M X 6M X 2.4M

- CB Walls
- 2 Roller Doors
- 100% Australian Steel
- Why buy Imported!?



**Reduced!**

**WORKSHOP SPECIAL**

3 BAY 6M X 9M X 2.8M  
WITH XL ROLLER DOORS

Wind Reg A \$11,300

Wind Reg B \$11,500

Cyclonic \$15,600

Full Colorbond. Includes  
Pre-hung PA door and window.



**Awnings**

Economical Awnings!  
Freestanding or attached  
Call for a price today!



**Gable Carport**

One End With Infill – 6m x 6m x 3m

Reg A = \$5,500,

Reg B = \$5,600, Reg C = \$6,120



**Reduced!**

**Reduced!**

Colorbond Walls – 6m x 12m x 3.6m

Reg A = \$14,100,

Reg B = \$15,900, Reg C = \$18,780



**5 Bays, 3 Open + 2 Lockup**

Full Colorbond – 7.5 m x 16.5 m x 3.3 m

Reg A = \$20,600,

Reg B = \$23,200, Cyclonic = \$26,980



**3 Bay With Lockup Zinalume®**

Little Lock-up – 6m x 9m x 3m

Reg A = \$10,300,

Reg B = \$10,800, Reg C = \$13,000



**3 Bay With Lockup Zinalume®**

2 Lock-up & 2 Open Bays – 7m x 14m x 2.7m

Reg A = \$15,700,

Reg B = \$17,500, Reg C = \$21,300



**Save \$4,000!**

**SPECIAL – Open Front Farm Shed**

Zinalume® – 12 m x 24 m x 5 m

Reg A = \$38,800,

Reg B = \$43,000, Reg C = \$52,700



**Save \$500!**

**Colorbond® Walls & Zinalume® Roof**

9.2 m x 12 m x 3.2 m

Reg A = \$17,500,

Reg B = \$18,500, Reg C = \$24,500



**Sliding Glass Door & A Roller Door**

Skillion Roof, Vertical Cladding –

6 m x 6 m x 2.7 m Reg A = \$9,700,

Reg B = \$9,990, Reg C = \$10,900



**6 Bay Colorbond® – Multi Function**

Free Internal PA Door – 7.5m x 18m x 2.9m

Reg A = \$21,050,

Reg B = \$22,990, Reg C = \$29,290



**SPAN – Open Gable & Open Side ZA**

9 m x 8 m x 3 m Side, 4 m Apex

Reg A = \$9,980,

Reg B = \$10,600, Reg C = \$12,300



**American Barn – Full Colorbond®**

3 x Roller Doors, 1 x PA Door, 22° Roof –

13 m x 12 m x 4 m Reg A = \$27,500,

Reg B = \$29,700, Reg C = \$35,700



Skylights not available for Cyclonic areas

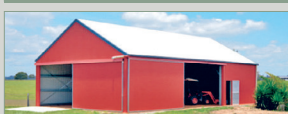
**Save \$1,500!**

**'The Hilton' – 22° Roof Pitch**

8 Skylights & 2 Whirlybirds –

7.5 m x 16 m x 3.6 m Reg A = \$24,780,

Reg B = \$27,600, Reg C = \$31,800



**Special**

30° Pitch & Steel Sliding Doors –

9 m x 15 m x 3.6 m, 6.2 m Apex

Reg A = \$29,200, Reg B = \$30,800



**Aircraft Hangers**

Aircraft Hangars, Large or Small!



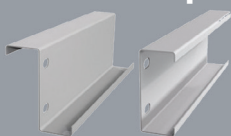
**Truck Port**

Zinalume® – 6m x 18m x 4.2m / 5.6m

Reg A = \$13,500,

Reg B = \$13,700, Reg C = \$14,500

**UNIVERSAL BEAM SHEDS | DOOR MOTORS | PURLINS | SHEETING | INSULATION**



**Colorbond®**

**THE TRUSTED NAME IN SHED SUPPLY**

**CALL NOW FOR A FREE QUOTE – 1800 785 224**

**or email – [sales@dinkydisheds.com.au](mailto:sales@dinkydisheds.com.au)**



Reg. A = Wind Region (inland and S.A.), Reg B= QLD & NSW Coastal areas, Reg. C = Cyclonic areas  
Delivered if on a standard route. All garages and small acreage sheds are importance level 2, farm sheds are importance level 1. Height quoted are gutter heights, pictures for illustrative purposes only. Prices are for the building kit only and are GST inclusive. All prices are an average, local site conditions may influence your engineering requirements. Dinky Di Sheds and Affordable Homes P/L Trading as Dinky Di Sheds, +61 7 46337474 ABN 75 164 746 639. We manufacture in every state. Prices were correct at time of printing and are subject to change anytime. Errors and omissions excepted. \*Matt finish may cost extra